



Forefront of

FinTech's

Digital Shift

Leading fintech's digital transformation and shift with cutting-edge solutions that transform financial services through advanced technology and data-driven insights.

FinTech

About Us

PiTangent Analytics is your trusted partner in FinTech innovation. With a passion for financial technology, we deliver cutting-edge solutions that transform businesses and empower BFSI institutions.

With extensive experience in blockchain, AI, Big Data Analytics, and banking APIs, PiTangent has the ideal expertise to deliver transformative FinTech solutions. Our adept developers craft customised platforms, intuitive UX/UI, robust cybersecurity, and seamless systems integration, making us the go-to FinTech innovator.

We are a "People first" organisation where trust is of utmost importance, ensuring complete integrity and transparency. We are a closely-knit family that shares more than just codes, designs, marketing, and sales ideas. We are a group of moms, dads, believers, creators, and much more, ready to go the extra mile to help you achieve digital success!

90+

Coding Geeks

300+

Happy Clients

600+

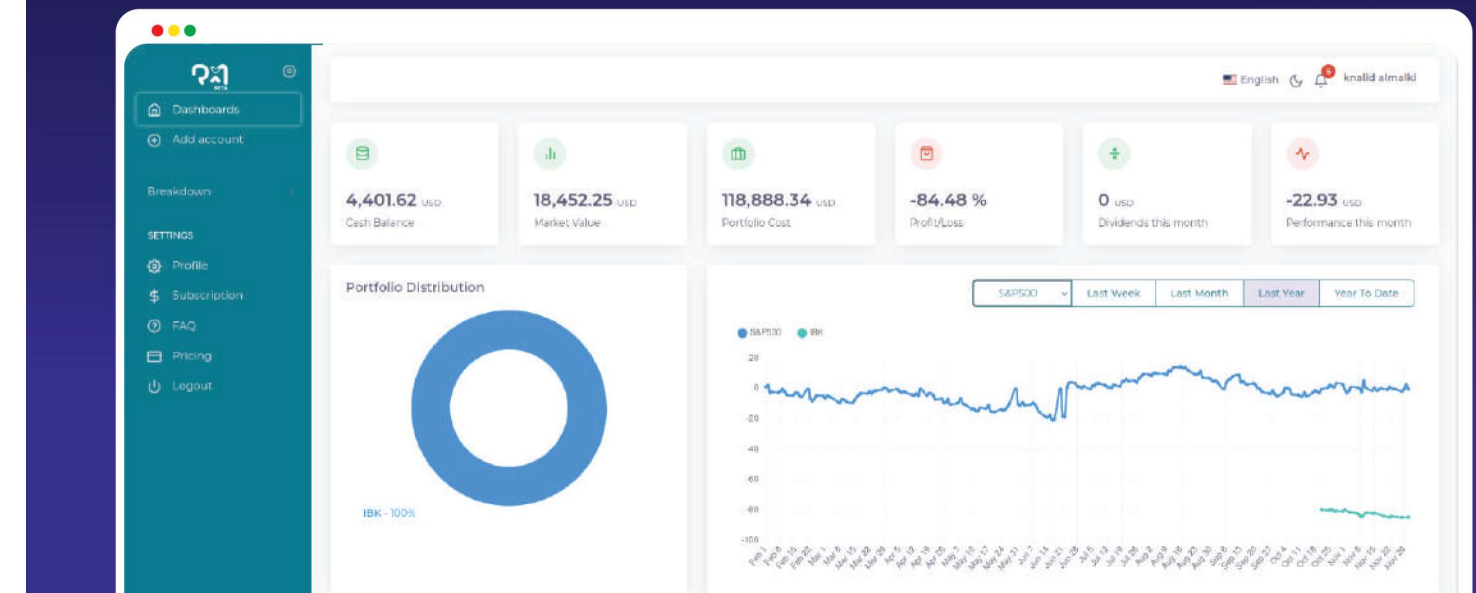
Product Delivered

Facing innovation lags? solve it through cutting-edge FinTech solutions, adopting emerging technologies, and tapping our agile expertise in AI, blockchain, and analytics.



PiTangent is committed to providing transparent and honest digital solutions - tailored for Enterprises, SMEs, and Startups globally. To achieve that, every project that comes to us goes through a unique phase of ideation to deployment. This is what we call the 6 Pillars of PiTangent!

RM Pro



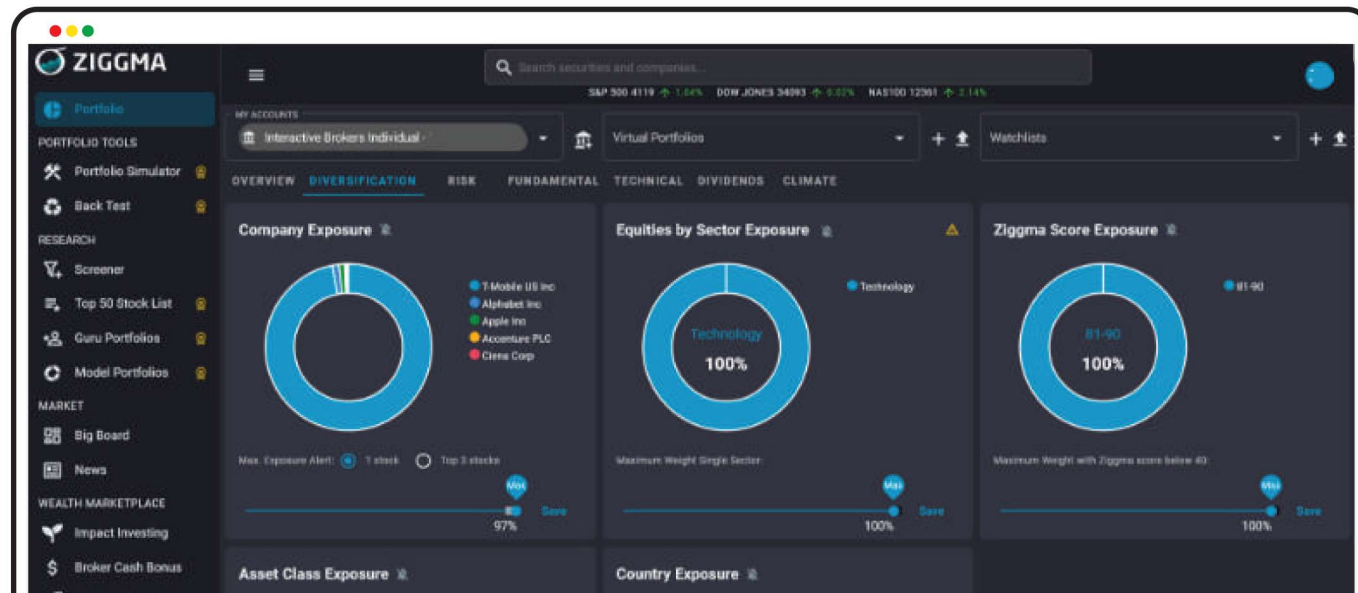
RmPro offers a consolidated view of your investment portfolios from multiple broker accounts. This platform is designed to assess your performance based on a diverse range of benchmarks that you can select.

Solutions

- Aggregated portfolios from multiple accounts into unified platform.
- Allowed custom benchmark creation for tailored performance evaluation.
- Provided detailed analytics on returns across diverse investment mix.
- Delivering user-friendly dashboard for clear portfolio visualisations.

With RmPro, investors gain a comprehensive view and insights into portfolio status and returns across all accounts.

Zigma



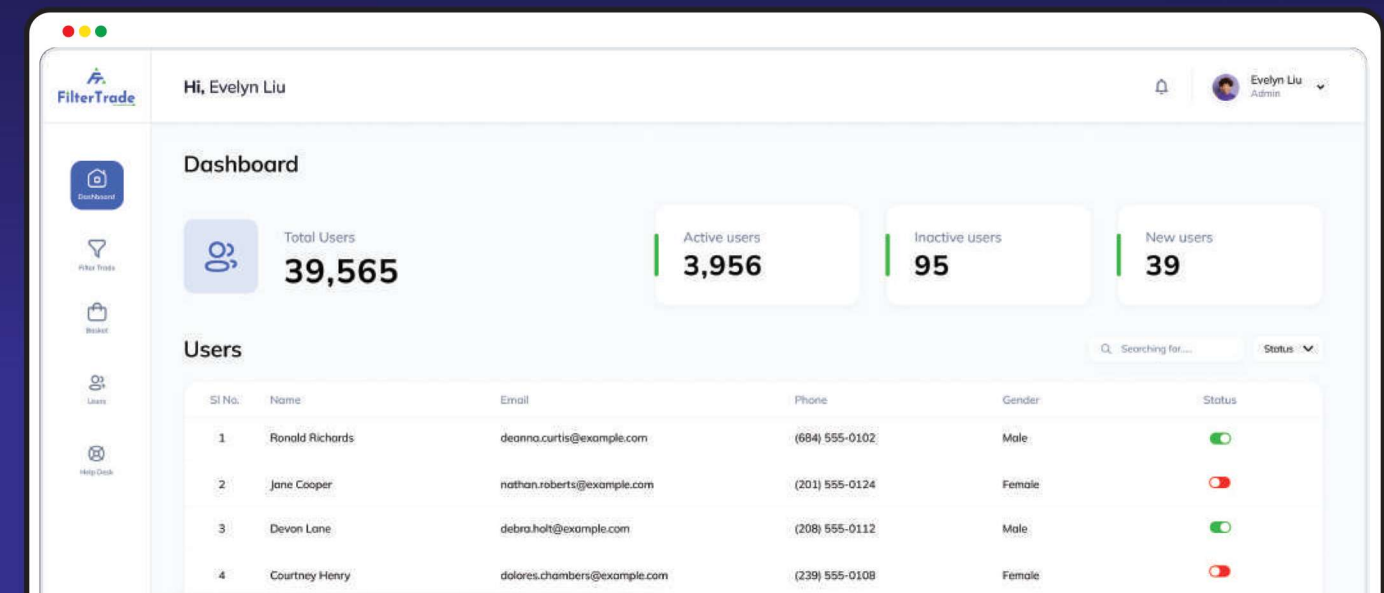
Zigma is an online portfolio management and investment research platform. It uses backend algorithms to score stocks and provides top data-driven investment ideas. Zigma also helps users manage their portfolios at their finger-tip.

Solutions

- Developed algorithms to quantitatively score and rank stocks.
- Provided customised portfolio management tools.
- Delivering top data-backed investment ideas.
- Integrated research and portfolio tracking seamlessly.
- Track your portfolio's carbon footprint.

Zigma empowers medium and long-term investors to make informed, research-backed investment decisions.

Filter Trade

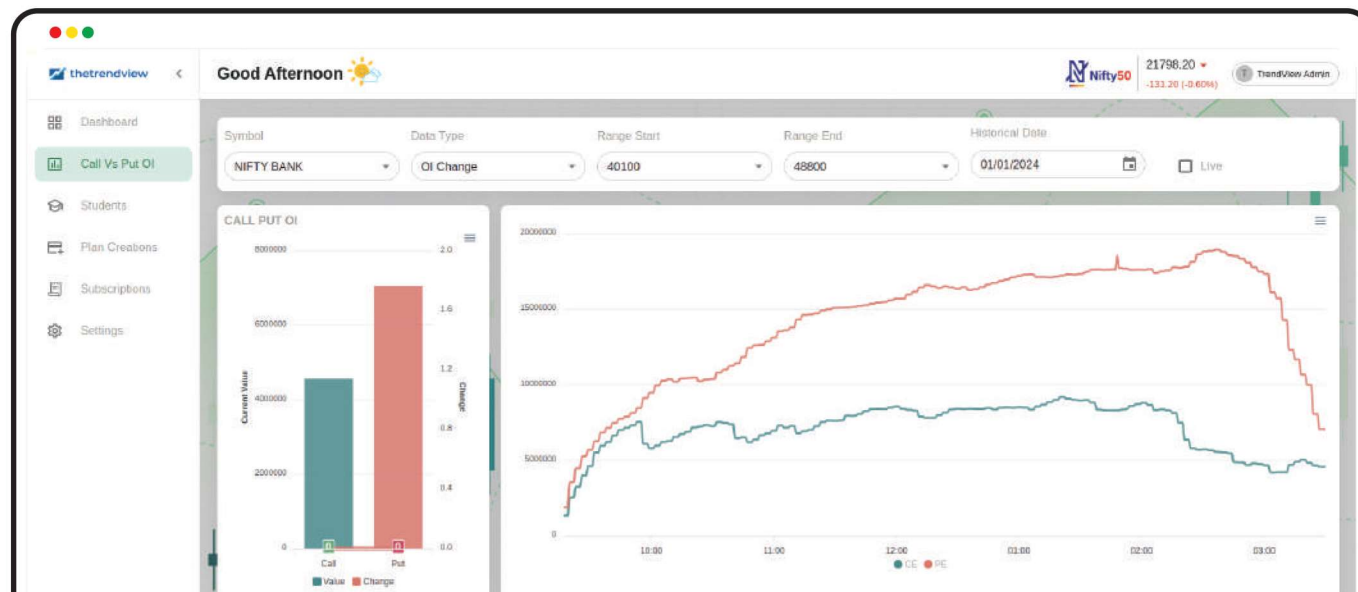


An informative strategy-based application is available to assist you in identifying market trends and making informed decisions regarding perfect entry and exit points. This application provides valuable insights into where significant investments are being made, allowing you to stay updated on where the big money is being allocated.

Solutions

- Gain valuable insights into the stock market and enhance your decision-making abilities as a trader through a comprehensive understanding of order flow analysis.
- Provide real-time information regarding stocks and their corresponding price fluctuations.
- Users can set a price alert, ensuring that they never miss out on any significant trading opportunities.

The Trade View

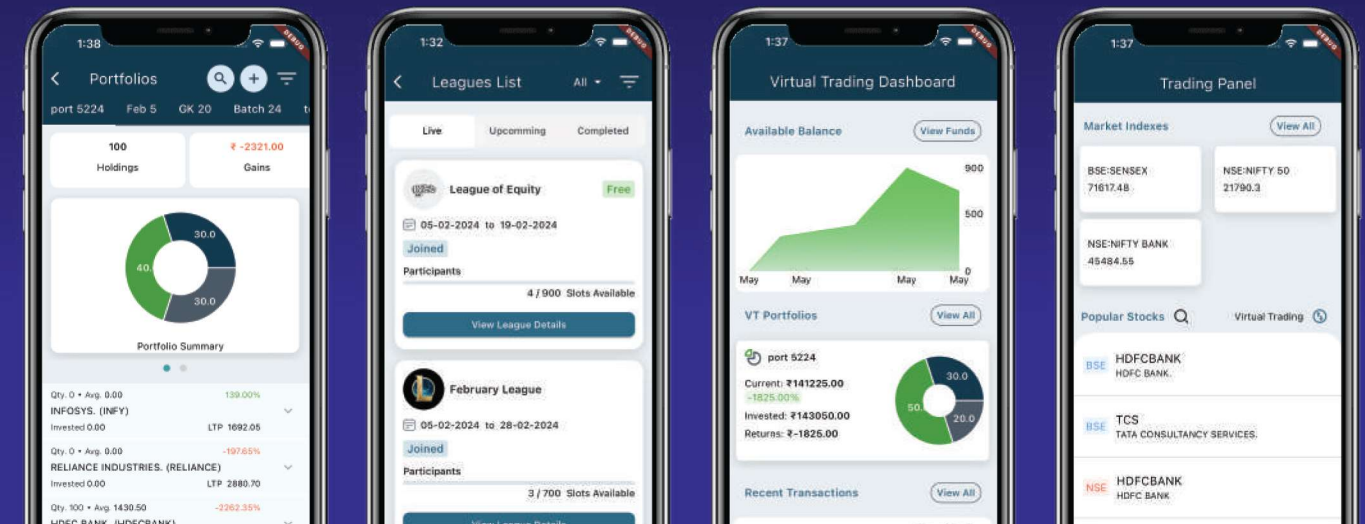


A straightforward trading indicator, that focuses on Open Interest (OI) changes and overall OI dynamics. Tailored for both beginners and expert traders, it acts as a bridge between technical analysis and trading strategies.

Solutions

- Provide real-time updates for Open Interest changes and overall OI, providing users with crucial information to make a timely decision.
- Enhance the visualization to provide clear and intuitive representations of support and resistance channels derived from OI data
- Allowing expert traders to fine-tune the indicator based on their specific preferences and trading strategies

Traders Terminal

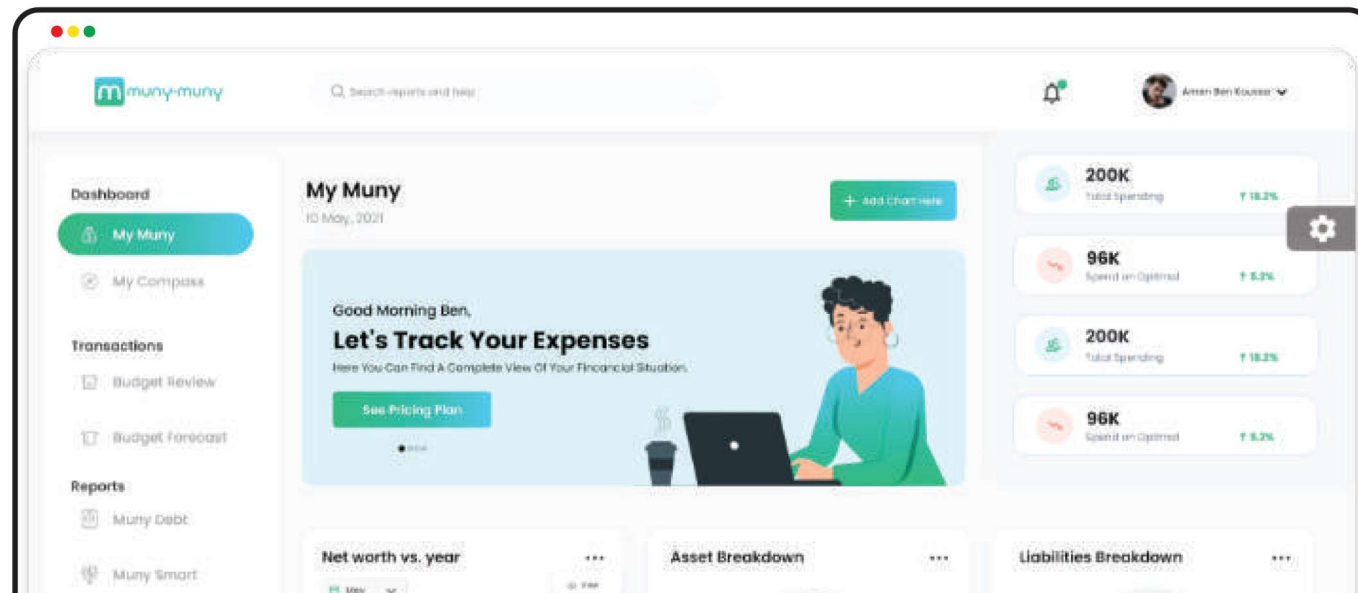


A cutting-edge virtual trading app designed specifically to help you learn the ins and outs of stock market trading and investing. Utilize our innovative virtual trading platform to not only enhance your knowledge but also establish a valuable social trading circle, enabling you to gain a comprehensive understanding of the dynamic stock market landscape.

Solutions

- Join Virtual trading leagues, practice building real-time portfolios, and compete with other participants to become an ace trader.
- Create virtual portfolios and utilize virtual money to test your strategies. This allows you to execute numerous trades and gain valuable experience without any financial risk.
- Engage and acquire knowledge from fellow traders and experts through interactive community-style chat groups.

MunyMuny



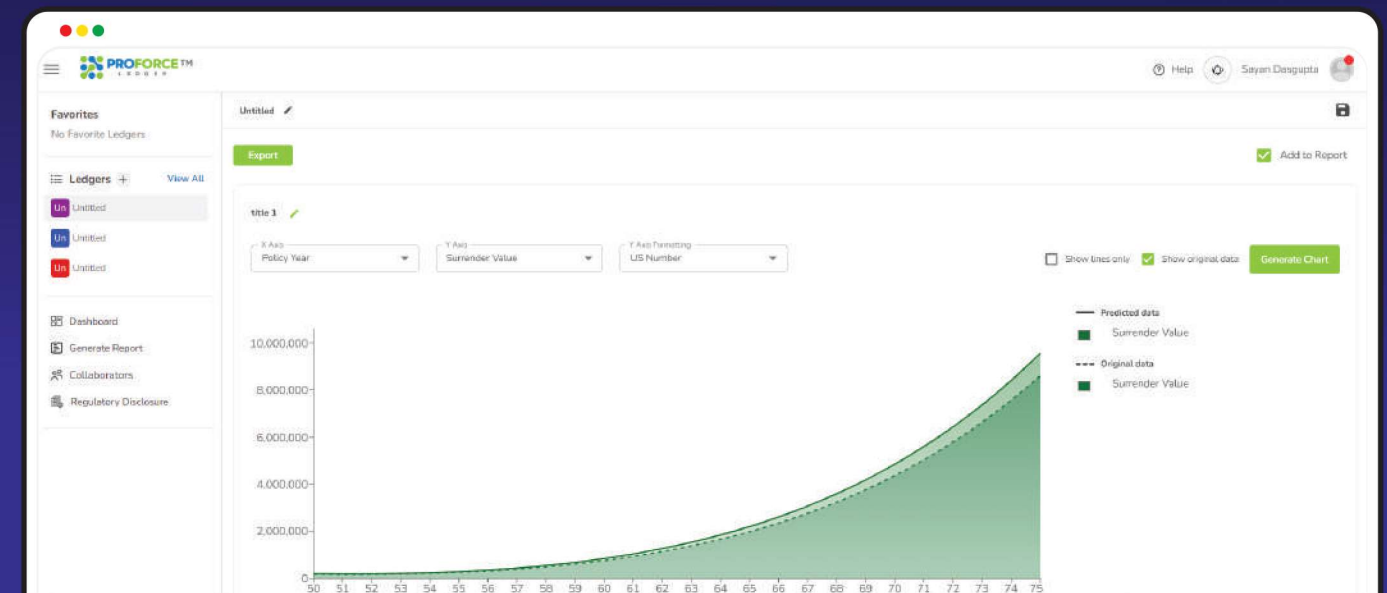
MunyMuny is an innovative personal finance app that eliminates the hassle of budget tracking across paper statements. Users can easily manage daily, monthly, and yearly budgets digitally and collaborate with others on joint expenses right from the app.

Solutions

- Simplifies personal finance management with digital budget tracking.
- Streamlines daily, monthly, and yearly budget planning.
- Facilitates collaborative expense management for joint expenses.
- Eliminates the need for paper statements in budget tracking and enables easy access to budget information anytime, anywhere.

With MunyMuny, users can manage their money digitally by organising and planning.

Proforce

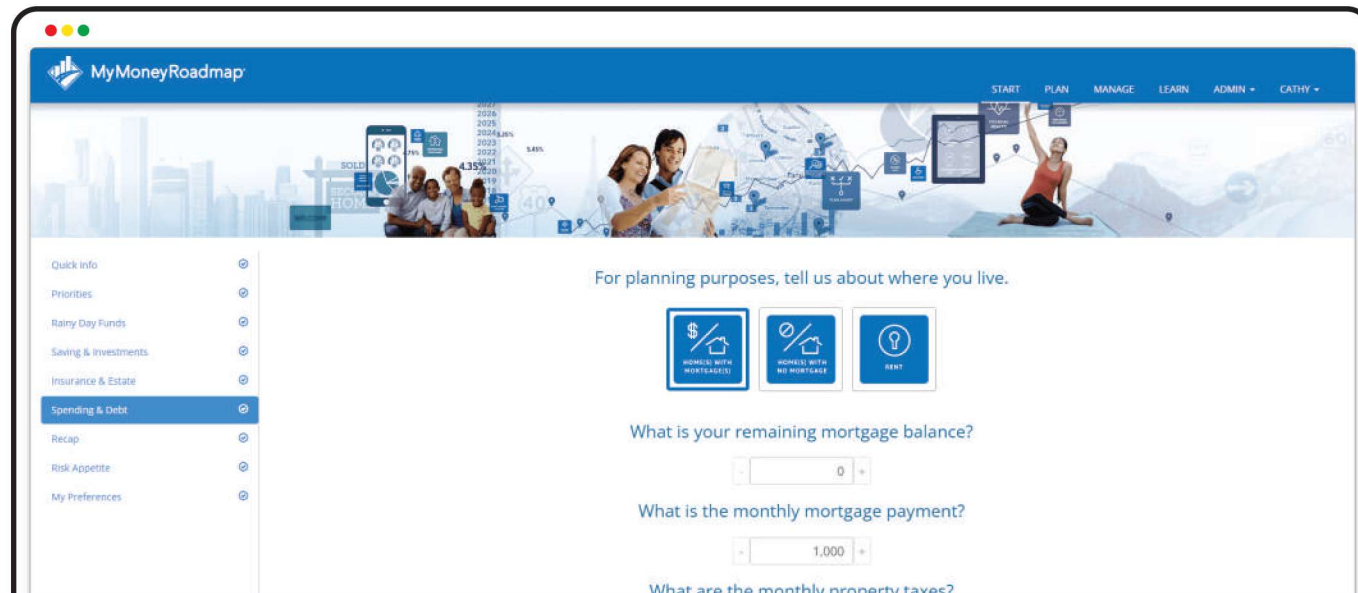


Proforce.AI is an AI-based spreadsheet application that utilizes artificial intelligence to create a portfolio model. It will automatically predict the impact on output/returns benefit columns when changes are made to input/premium values and vice versa. This allows for efficient analysis and optimization of the portfolio's performance. It employs a tree-based model to predict column values based on user-input changes, providing a predicted sheet for comparison with the original.

Solutions

- In the uploaded spreadsheet, a user can select dependent and independent columns.
- The AI architecture models each column for prediction. Tree-based models were used.
- Predictions are made based on the changes in cells made by the user.
- The predicted sheet is displayed along with a comparison with the original one both graphically and in a tabular structure.

MyMoneyRoadmap



Our plug-and-play approach facilitated the development of **MyMoneyRoadmap** which seamlessly helped them connect advisors and clients through an intuitive platform for collaborative financial planning.

Solutions

- Integrated digital goals planning tool.
- Customizable personal financial dashboards.
- Secure collaboration workflows for advisors and clients.
- Advanced analytics and comprehensive reporting features.

MyMoneyRoadmap delivered the next generation of fintech solutions to streamline and enhance the financial planning experience.



Get In Touch



📞 +91 81009 54414

🌐 www.pitangent.com

📍 India, UK, Australia