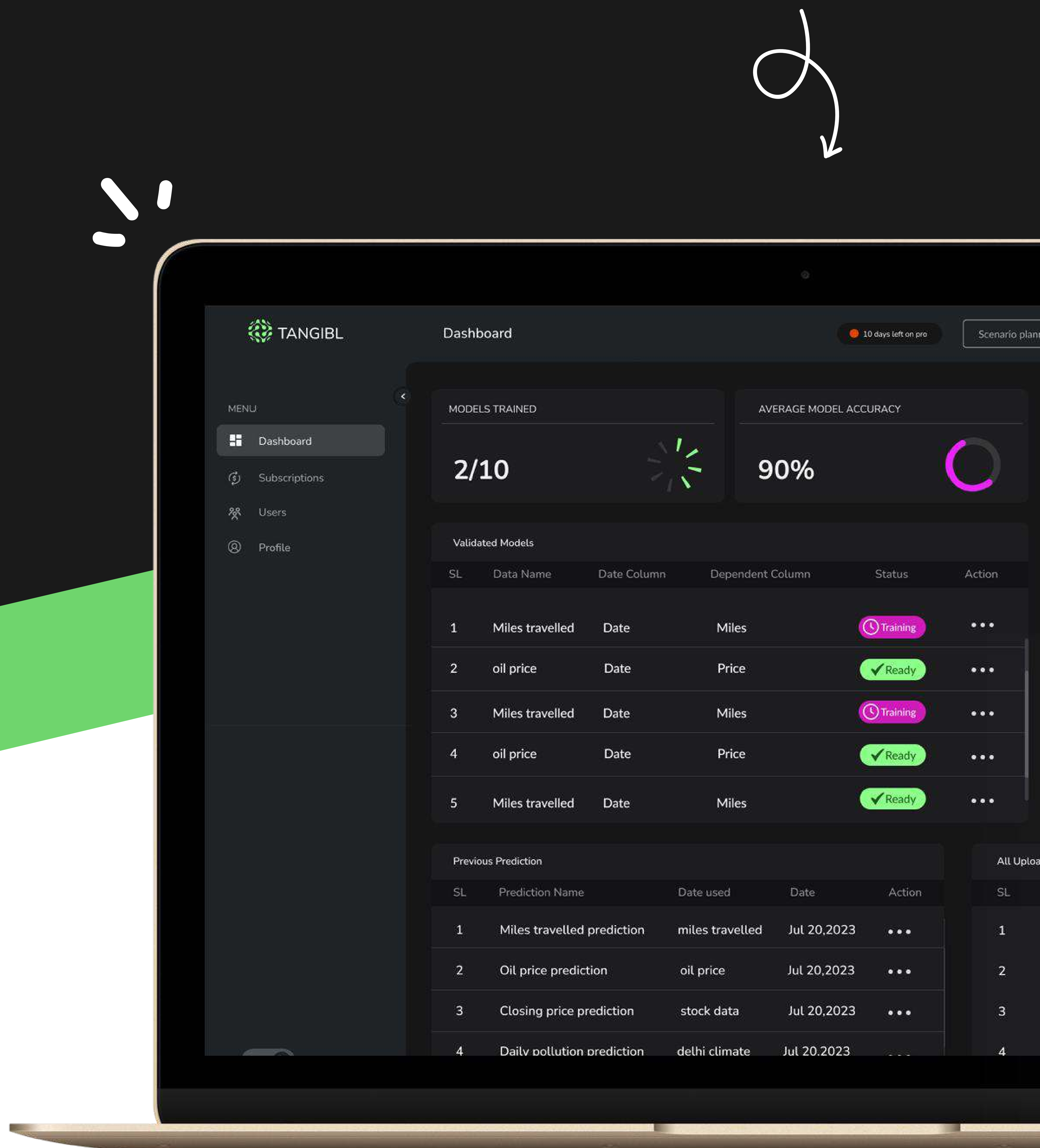


# ENJOY THE TRIPLE IMPACT OF ONE AI SOLUTION!

One tailored AI solution adapts to your business needs, ensuring maximum impact across 3 different horizons!





INTRODUCTION —

## PIONEERING INNOVATION

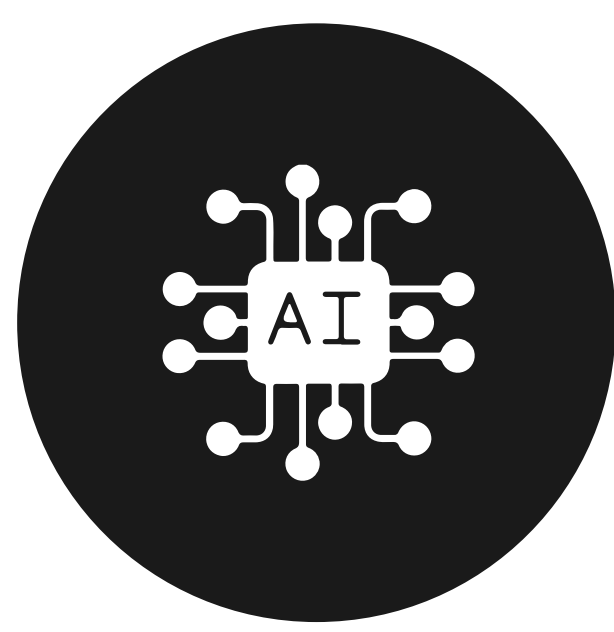
Tangibl isn't a one-size-fits-all AI product. It's a suite of solutions meticulously crafted to address the unique pain points, inefficiencies, and opportunities within the retail/e-commerce, healthcare, and energy sectors. Tangibl's deep understanding of these industries informs AI models that deliver actionable insights, not just generic data analysis.

Our solutions blend industry expertise with cutting-edge AI techniques. Experience the benefits of predictive analytics, seamless integration, explainable models, and solutions that scale alongside your business. Unlock smarter operations, data-driven insights, and a competitive edge with Tangibl – the future of AI for your industry

## KEY FEATURES —

# HOW DOES TANGIBL WORK FOR YOU?

The key features combine powerful AI techniques with industry-specific insights to deliver maximum impact for your business



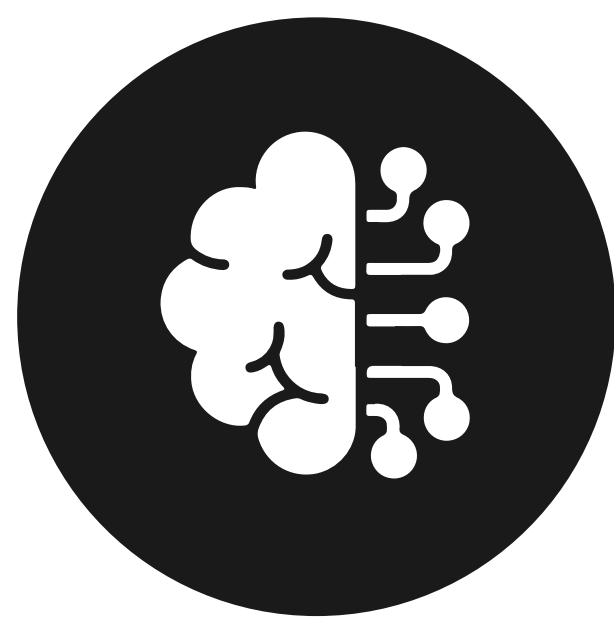
### Industry-Specific AI Models

Tangibl offers AI models specialized for retail, healthcare, and energy



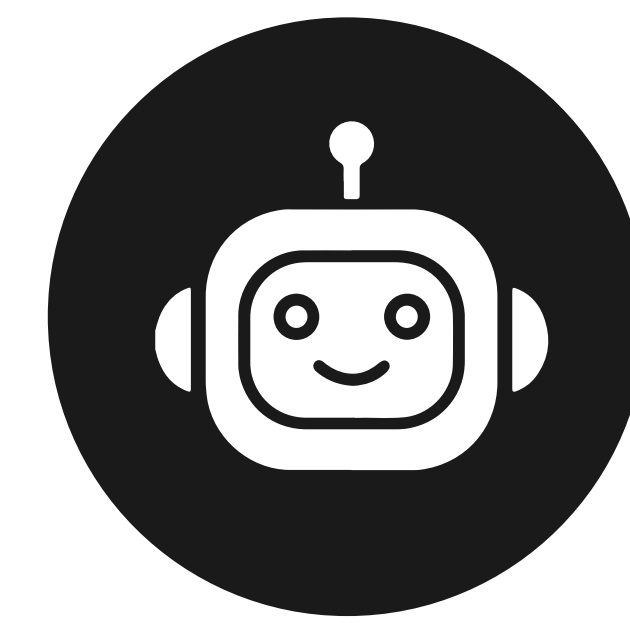
### Predictive Analytics

Forecast trends and anticipate needs with proactive decision-making solutions



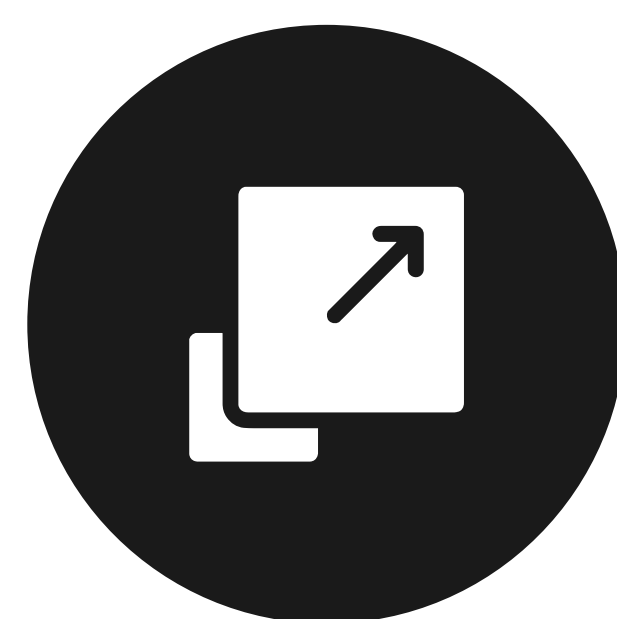
### Seamless Integration

Seamlessly integrates with existing systems, minimizing disruption



### Explainable AI

Models prioritize explainable AI, enhancing trust and adoption in healthcare



### Scalability

AI solutions scale with your business, from Startups to enterprises

## TAILORED AI FOR MEASURABLE IMPACT

Introducing 3 Tangibl solutions shaping the future of healthcare, retail & e-commerce, and energy!

### A Cluster of AI solutions for

- Healthcare (Cortex+)
- Retail & Ecommerce (Storesense)
- Energy (PowerPulse)

**Tangibl+**

**Tangibl-Commerce**

**Tangibl-NRG**





## BENEFITS —

### QUICK SOLUTIONS



#### DEEP INDUSTRY SPECIALIZATION

Tangibl's AI tools are tailored for sector-specific needs, ensuring precise models and actionable insights.

#### HUMAN-IN-THE-LOOP FOCUS

Our AI enhances decision-making, supporting experts with insights for ethical use and building trust.



#### EMPHASIS ON EXPLAINABILITY

Tangibl's transparent AI models build trust by clearly explaining decisions to healthcare stakeholders.

#### PREDICTIVE, NOT JUST DESCRIPTIVE

Tangibl uses predictive analytics to help businesses foresee trends and make proactive, informed decisions.



## **GET IN TOUCH**

Have specific AI needs? Let's collaborate on  
AI solutions that work for you.  
Contact us today!

### **PHONE**

+91 81009 54414

+44 7389646362

### **EMAIL**

[sales@pitangent.com](mailto:sales@pitangent.com)

### **OUR WEBSITE**

[www.tangibl.ai](http://www.tangibl.ai)



# TANGIBL



**SCAN HERE**